



[www.lghausys.com](http://www.lghausys.com)

# WOVEN

Woven vinyl flooring for  
retail & shop, hotels, offices,  
healthcare facilities



Sheet / Tile

## Headquarters

LG Hausys, Ltd One IFC, 10 Gookjegeumyoong-Ro, Yeongdeungpo-Gu, Seoul, Korea  
[www.lghausys.com](http://www.lghausys.com) | Email : [lginfo@lghausys.com](mailto:lginfo@lghausys.com)



## 60 years of history in vinyl flooring manufacturing

The full range of flooring portfolio and 60 years innovative experiences set LG Hausys to the leading flooring company in South Korea as specialized company in interior materials.

Our floorings have been making successful customer stories not only for living spaces also commercial, healthcare, hotel and specialty as well. We still are looking for the further innovations to make the best living and commercial space in your life.

And we welcome you to introduce our one of the trendy and quality of vinyl flooring product 'WOVEN'. Design your space with high sustainability and experience how easy to care flooring is.

Please visit [lghausys.com](http://lghausys.com) for more product information or to find your local representative.

## WOVEN stylish and functional vinyl flooring for retail & shop, hotels, offices, healthcare facilities

### | Easy Maintenance

Utmost benefit of LG Hausys WOVEN is easy to clean with high durability and efficiency. Almost every stain can be removed with hot water, a mop and a vacuum. There are no needs for harmful chemical agents or special equipment to clean up your space.

### | Sound Reduction

It is designed to reduce noise levels from foot traffic on floors underneath where it is installed. Through thousands of test, sound reduction reaches up to 15dB. This soft and thicker flooring will make your space cozier than ever.

### | 10 years Warranty

Every LG Hausys WOVEN product delivers long life and is supplied with either a 10 years guarantee for a better customer experience. All our floorings hold EN1307 durability class 33 making it a much more robust solution for all environments, even the areas of high foot traffic.



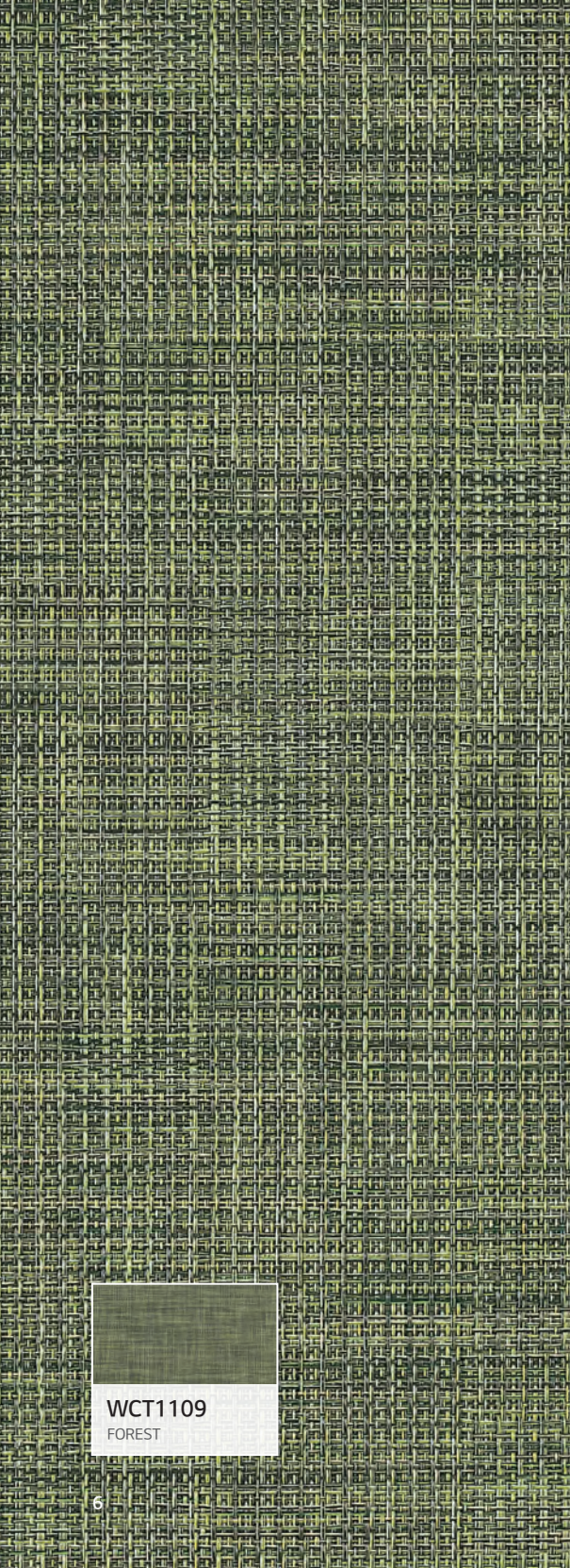


WCT2002  
MINT / GREY



WCT2001  
MINT / BEIGE



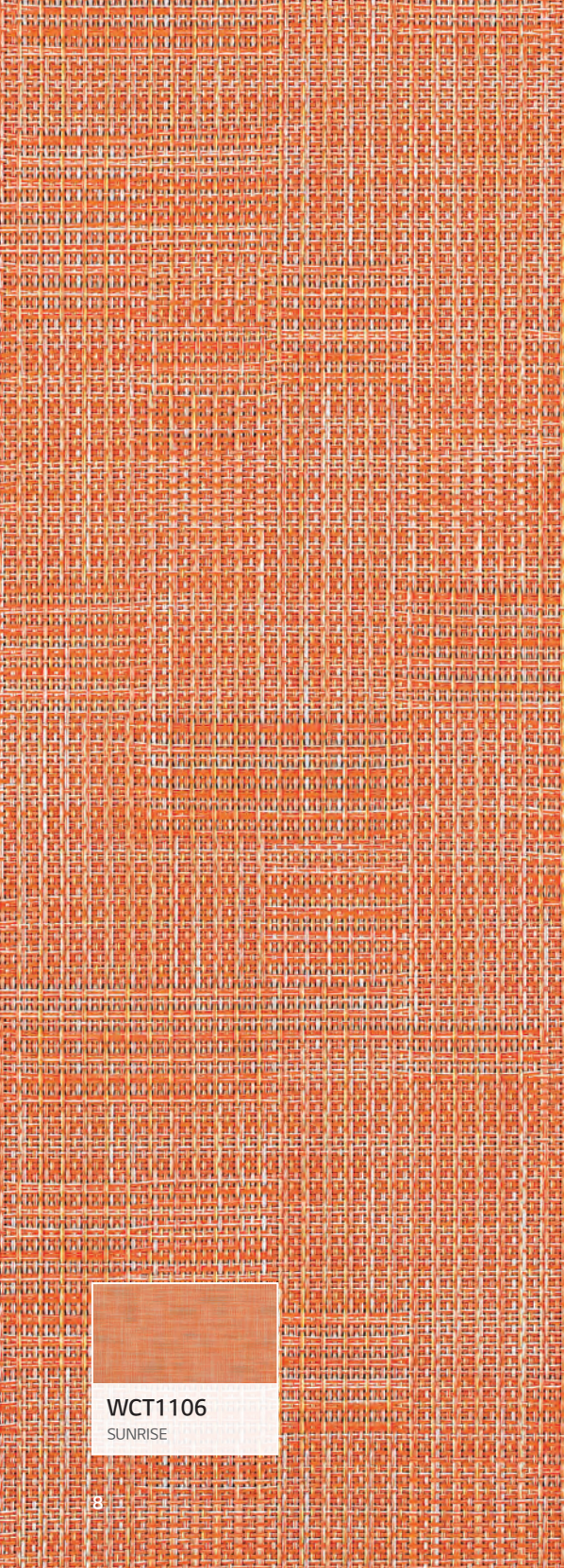


WCT1109  
FOREST

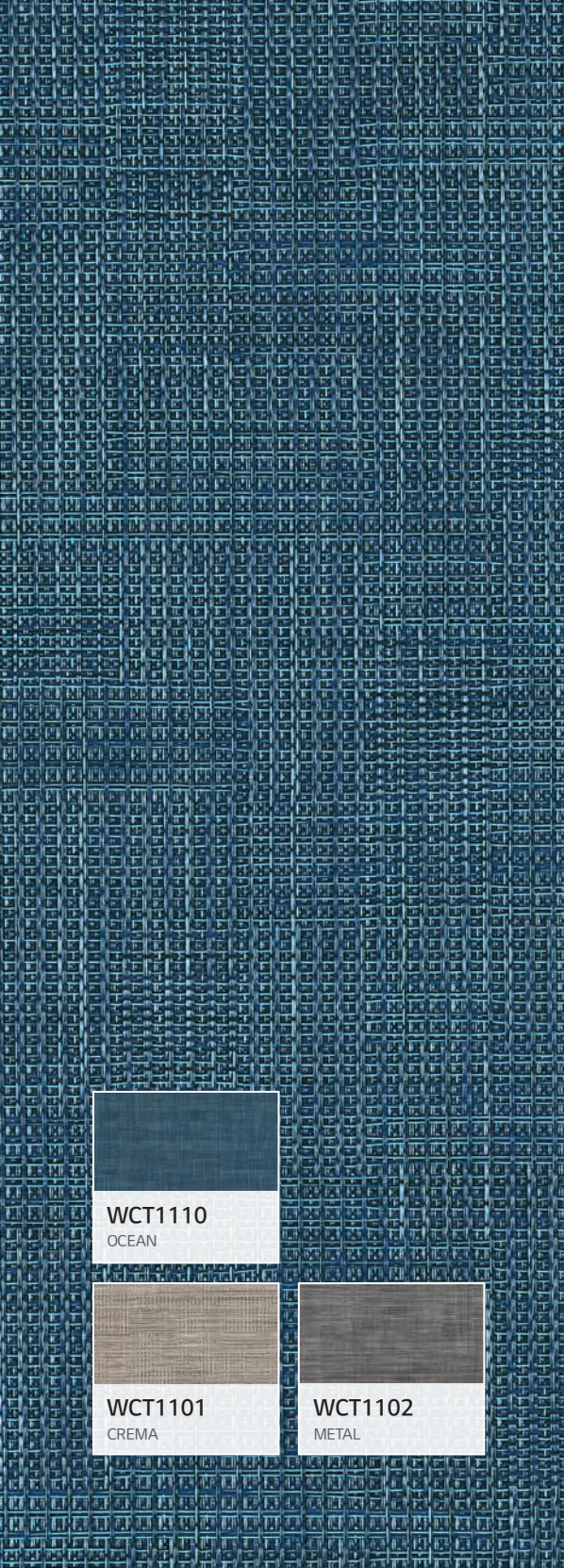


WCT1107  
SCARLET

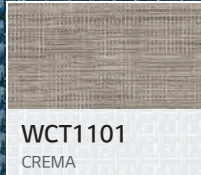




WCT1106  
SUNRISE



WCT1110  
OCEAN

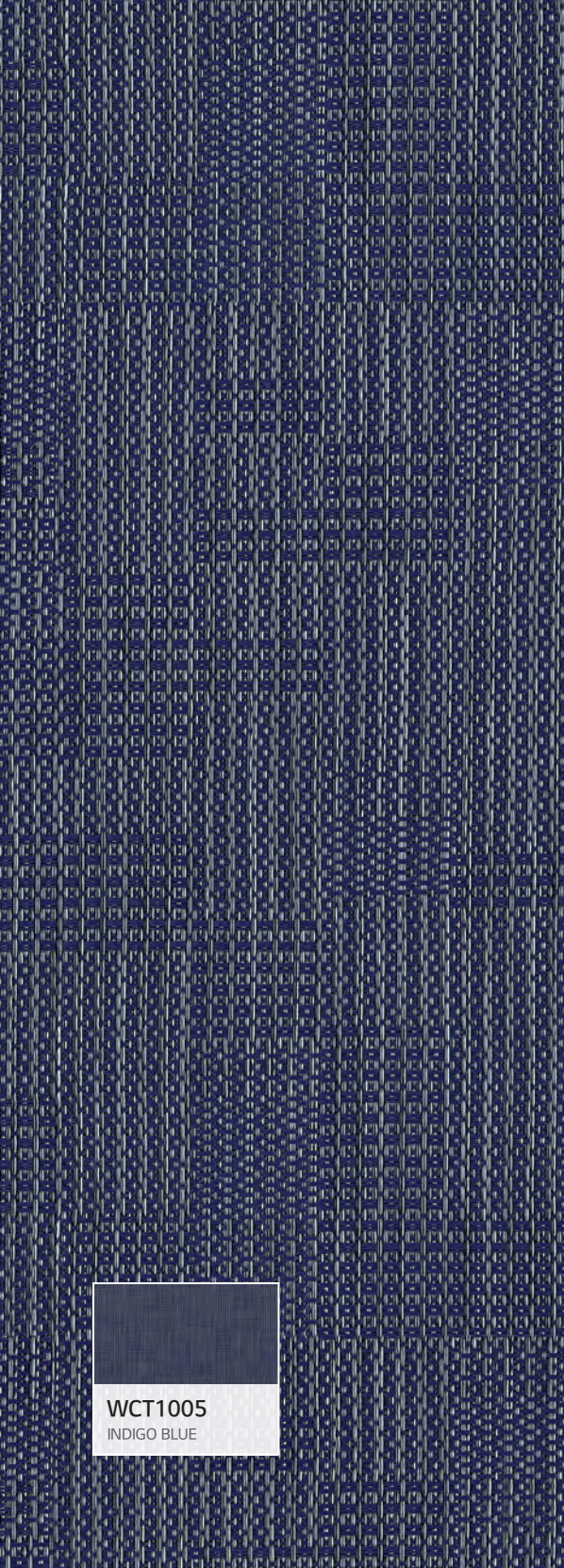
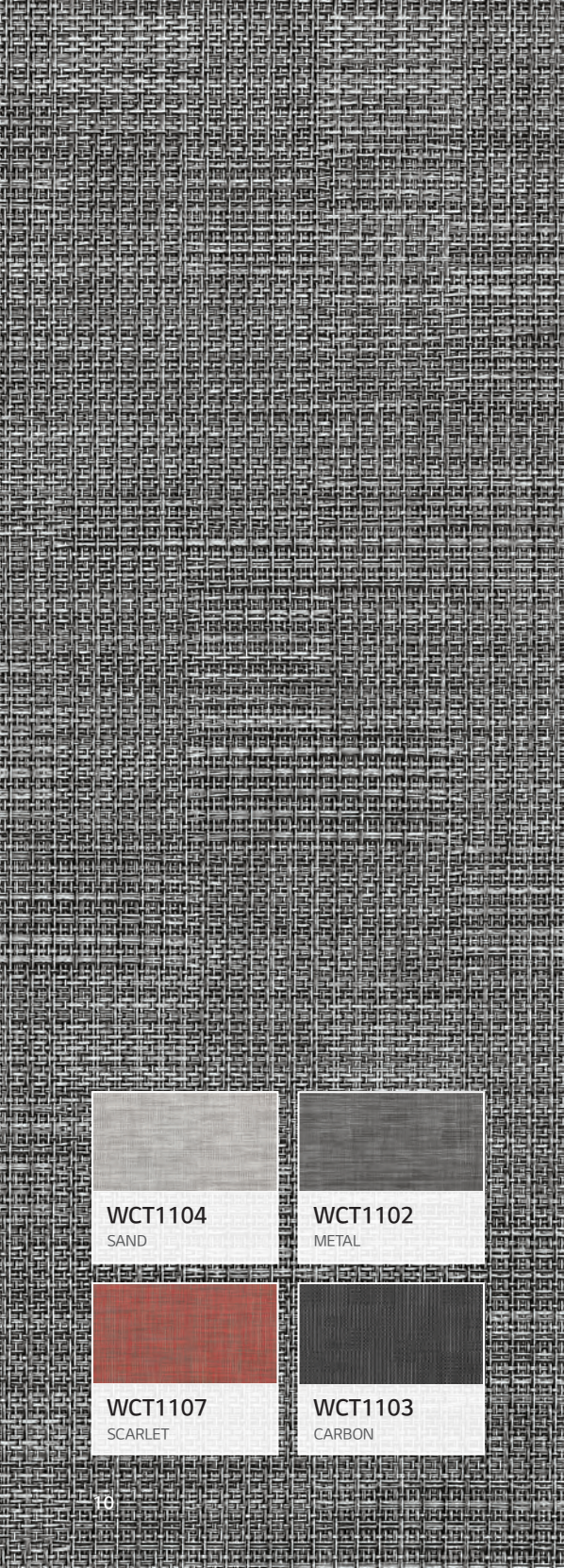


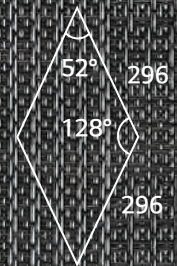
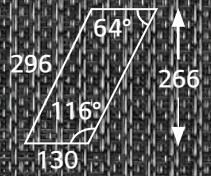
WCT1101  
CREMA



WCT1102  
METAL







**WCT1103**  
CARBON

**WCT1104**  
SAND

**WCT1102**  
METAL



# WOVEN

The premium Woven product with fabrics texture and easy-to-clean performance  
Size 3.5mm(T) X 500mm(W) X 500mm(D)



**WCS1104**  
SAND

# INDEX Colors

 **Tile Type** • Thickness : 3.5 / 5.0 • Size : 500 (W) X 500mm (L)  
 **Sheet Type** • Thickness : 3.5 • Size : 2M (W) X 20M (L)

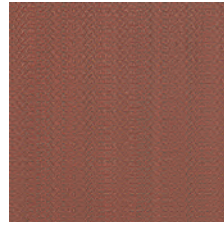
## DOTS



WCT2001  
MINT / BEIGE



WCT2002  
MINT / GREY

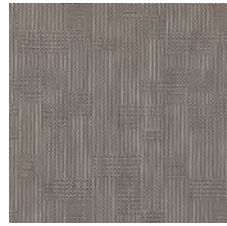


WCT2005  
MUSTARD SEED

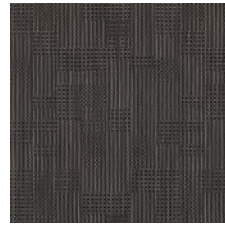


WCT2006  
BARK

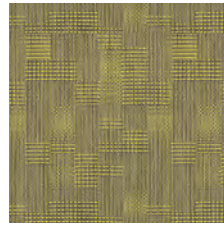
## SQUARE



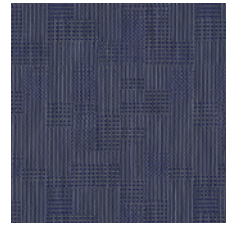
WCT1001  
QUARTZ



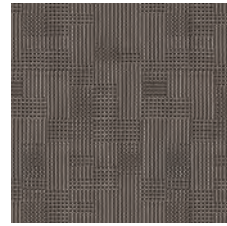
WCT1003  
SLATE



WCS1004  
WCT1004  
LEMON YELLOW



WCS1005  
WCT1005  
INDIGO BLUE



WCS1006  
WCT1006  
MOCHA

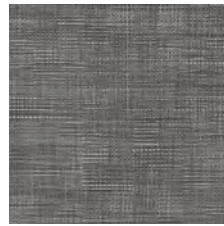
## NEUTRAL



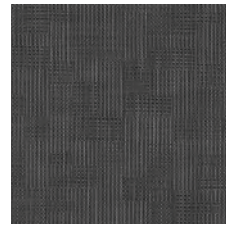
WCS1104  
WCT1104  
SAND



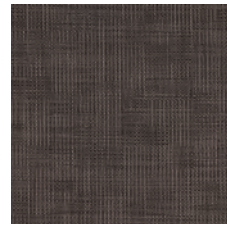
WCS1101  
WCT1101  
CREMA



WCS1102  
WCT1102  
METAL



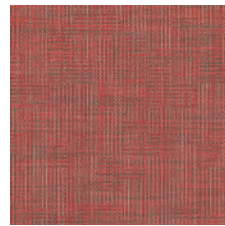
WCS1103  
WCT1103  
CARBON



WCT1105  
ESPRESSO



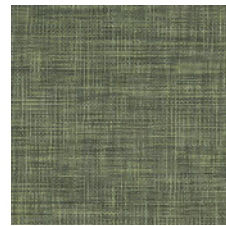
WCT1106  
SUNRISE



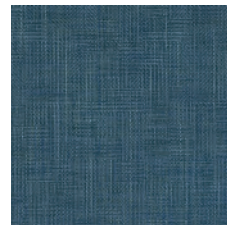
WCS1107  
WCT1107  
SCARLET



WCS1108  
WCT1108  
GARNET



WCS1109  
WCT1109  
FOREST



WCT1110  
OCEAN

# Specification

Characteristic	Tile			Sheet		
	Standard	Unit	Result	Standard	Unit	Result
Format			Tile			Sheet
Classification	EN 1307		33	EN 1307		33
Size		mm	500 x 500	ISO 24341(EN 426)	mm	2,000(Width)
Packing unit		Pcs / Box	26 / 18		M	2(Roll length)
Thickness	ISO 1765	mm	3.5 / 5.0	ISO 1765	mm	3.5
Weight	ISO 8543	g/m <sup>2</sup>	3,200 / 4,100	ISO 8543	g/m <sup>2</sup>	3,200
Dimensional Stability	ISO 2551(EN986)	%	fulfilled	ISO 2551(EN 986)	%	fulfilled
Flexibility(Mandrel Test)	ISO 24344(EN 435)		No crack	ISO 24344(EN 435)		No crack
Color fastness to light	ISO 105-B02		≥ 7	ISO 105-B02		≥ 7
Dyanmic Coefficient of Friction	EN 13893		DS	EN 13893		DS
Slip Resistance	DIN 51130		R10	DIN 51130		R10
Chemical Resistance	ISO 26987(EN 423)		High resistance	ISO 26987(EN 423)		High resistance
Effect of Castor chairs	EN 985		No damage	EN 985		No damage
Reaction to Fire	EN 13501-1		Bfl - s1	EN 13501-1		Bfl - s1
Electrostatic Behavior(Body voltage)	EN 1815	kV	< 2	EN 1815	kV	< 2
Thermal Behavior(Body voltage)	EN 12667	m <sup>2</sup> K / W	0.042	EN 12667	m <sup>2</sup> K / W	0.058
Impact Sound Insulation	EN ISO 10140	dB	15	EN ISO 10140	dB	17
Airborne Sound Absorption	EN ISO 354		0.05	EN ISO 354		0.15
Frayproof	EN 1814		Frayproof	EN 1814		Frayproof

# Certification



### Durability (EN 1307)

Class 33 - solution for all environments, even areas of high foot traffic.



### Anti-slip Property (DIN 51130)

Class R10. It has anti-slip function and does not slip even at 10 - 19 ° of inclination angle.



### Sound Reduction (EN ISO 10140)

15dB - reduce noise levels from foot traffic up to 15dB



### Indoor Air Quality

Floorscore contributes to a higher LEED rating. WOVEN is certified for indoor air quality (emissions).



### Reaction to Fire (EN 13501-1)

Bfl - s1 highest level in PVC Flooring



### Wear Resistance (EN 985)

There is no surface damage in wheel rotation tests (25,000 iterative rotation)

※ Colors of the above images can differ from the actual product.