

SCHÖNHAUSER TOR

New image for *Schönhauser Tor*

The charming appeal of a HI-MACS® Solid Surface entrance



Photo: Volker Mai

In the heart of Berlin, at the crossroads between the Schönhauser Allee avenue and Torstraße, stands the **Schönhauser Tor**: a modern executive and commercial complex. The original structure dates back to the 18th Century and it is situated along the *Zoll- und Aksisemauer*, the wall which used to divide the city of Berlin in two, built with a series of simple pillars and home to the customs office. The complex was used as an entrance gate to the royal granary, with a farm annexed to it. The Gate was demolished during the 19th Century. The styling of the new building, dated 1995, appealed first and foremost due to its combination of materials, structures and colours.

To renovate the entrance of the building, the architect **Resa Gartner**, of Studio **neo systems architects** in Berlin, nonetheless preferred a different project: the atrium of the building is reached by crossing a bright entrance which is a net contrast with the current glass and natural stone façade. *“To achieve a Corporate Design of the different works – i.e. parts of the decorated and backlit façade as well as the interior décor – we chose the HI-MACS® acrylic stone by LG Hausys. Such a broad range of applications and the creation of seamless structural elements with double-curved surfaces would not have been possible with any other material”* states Gartner.

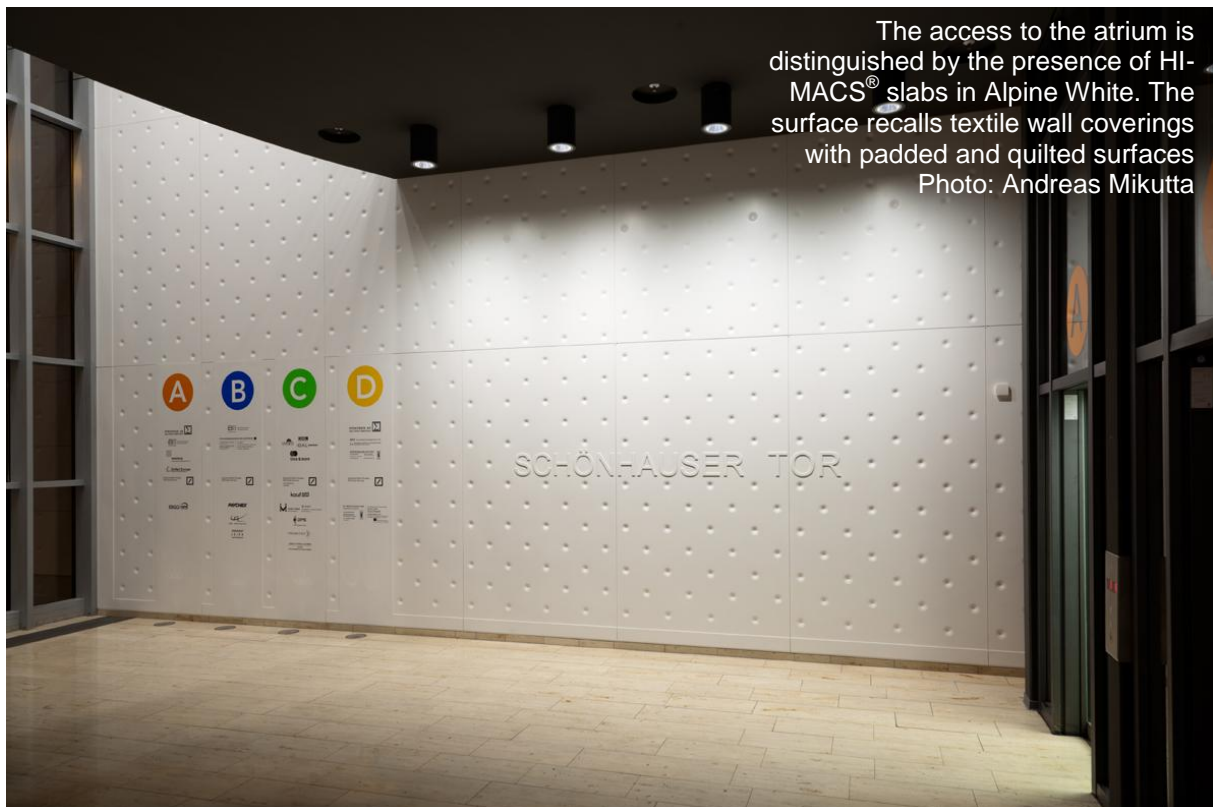
HI-MACS® Press Contact:

Mariana Fredes
LG Hausys Europe
mfredes@himacs.eu
+41 (0)22 879 54 83

Elegance clad in white

LG Hausys Europe/Hi-MACS®, in close collaboration with the team from the company **5D Engineering**, provided their technical support with the aim of reproducing as faithfully as possible the ideas at the core of the project. This necessitated a lengthy construction process, which in addition to the creative aspect also had to satisfy the technical-construction approval requisites: the German Building Inspectorate certified, in this case with a conformity declaration, the use of the structural elements of the façade. The façade overlooking the street is made with translucent **HI-MACS®** slabs in **Opal colour** and backlit with LEDs, which reproduce a video screen. The electronic control of each individual LED is used to display moving figures, characters and symbols like a raster image. The installation is simple yet elegant, without being exhibitionist. The external surface of the portal's arch has a further coating to protect it from any graffiti. *'Touch sensitivity is a distinguishing trait of this material and it is absolutely unusual for a plastic material. This is also demonstrated by the reaction of a few passers-by who get the urge to just skim the elements'*, comments the architect, Gartner.

The portal's arch was built by the German company, Rosskopf & Partner AG.



The access to the atrium is distinguished by the presence of HI-MACS® slabs in Alpine White. The surface recalls textile wall coverings with padded and quilted surfaces
Photo: Andreas Mikutta

The brightness of the installation continues inside the building: even the foyer, which acts as a connecting element between the entrance and the atrium of the building, is made of HI-MACS®. The elements are in **Alpine White** colour. The ornamental decoration recalls the textile wall coverings or padded and quilted surfaces. The width and depth limited of the joints between each individual slab produces the effect of a mesh, yet the entire surface still appears to be uniform and homogeneous. The counters, letterboxes and benches in the

HI-MACS® Press Contact:

Mariana Fredes
LG Hausys Europe
mfredes@himacs.eu
+41 (0)22 879 54 83

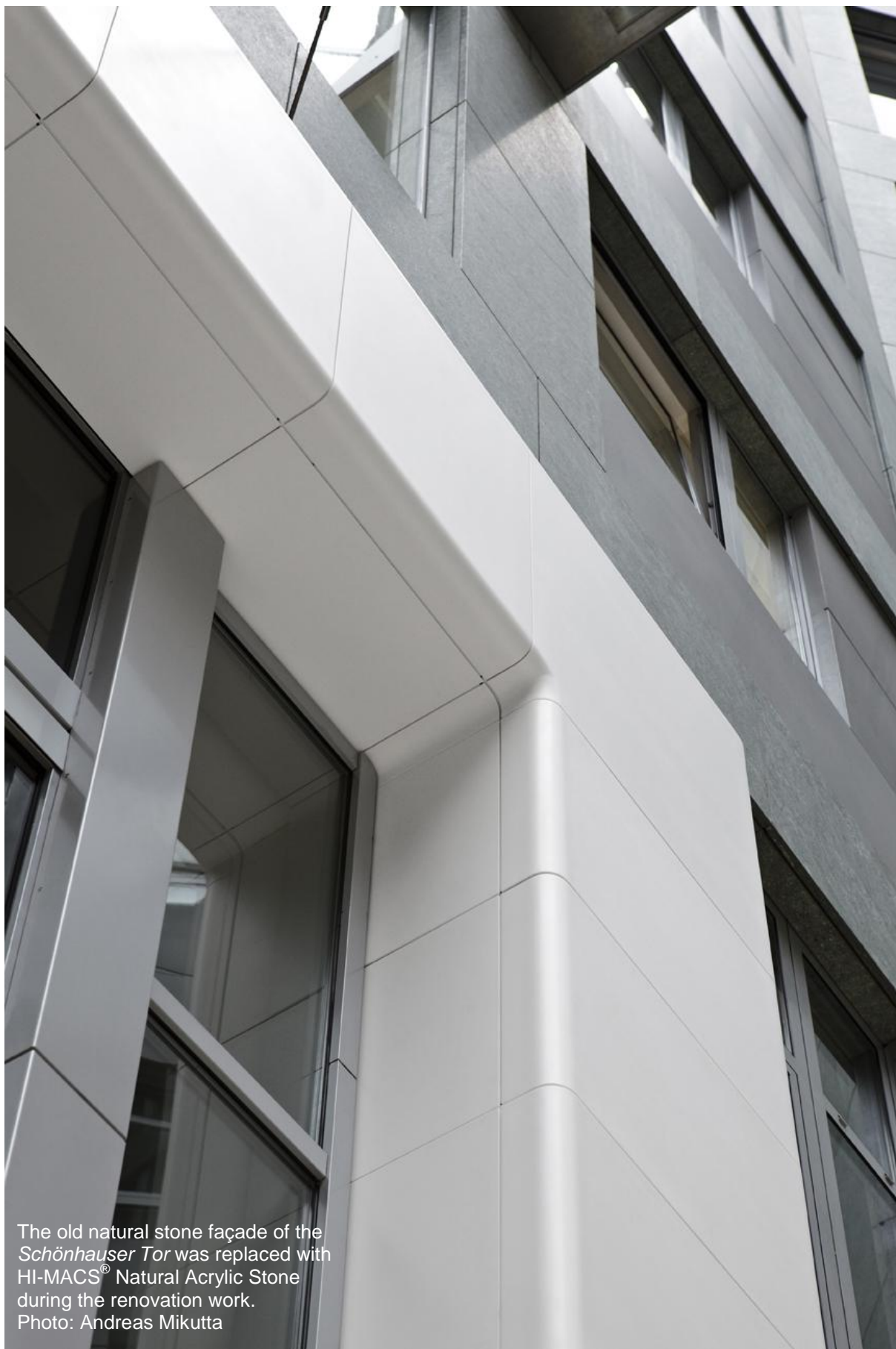
covered hall of the *Schönhauser Tor* were all made of acrylic stone as well. In this case, too, the architect was able to rely on the experience of Roskopf & Partner AG for the processing of the Solid Surface. Thanks to the use of HI-MACS® both outside and inside the building, the entire project for the entrance takes on a uniform and bold character.



The furnishings in the covered atrium inside the *Schönhauser Tor* were also made with HI-MACS® Natural Acrylic Stone.
Photo: Andreas Mikutta

HI-MACS® Press Contact:

Mariana Fredes
LG Hausys Europe
mfredes@himacs.eu
+41 (0)22 879 54 83



The old natural stone façade of the *Schönhauser Tor* was replaced with HI-MACS[®] Natural Acrylic Stone during the renovation work.
Photo: Andreas Mikutta

HI-MACS[®] Press Contact:

Mariana Fredes
LG Hausys Europe
mfredes@himacs.eu
+41 (0)22 879 54 83

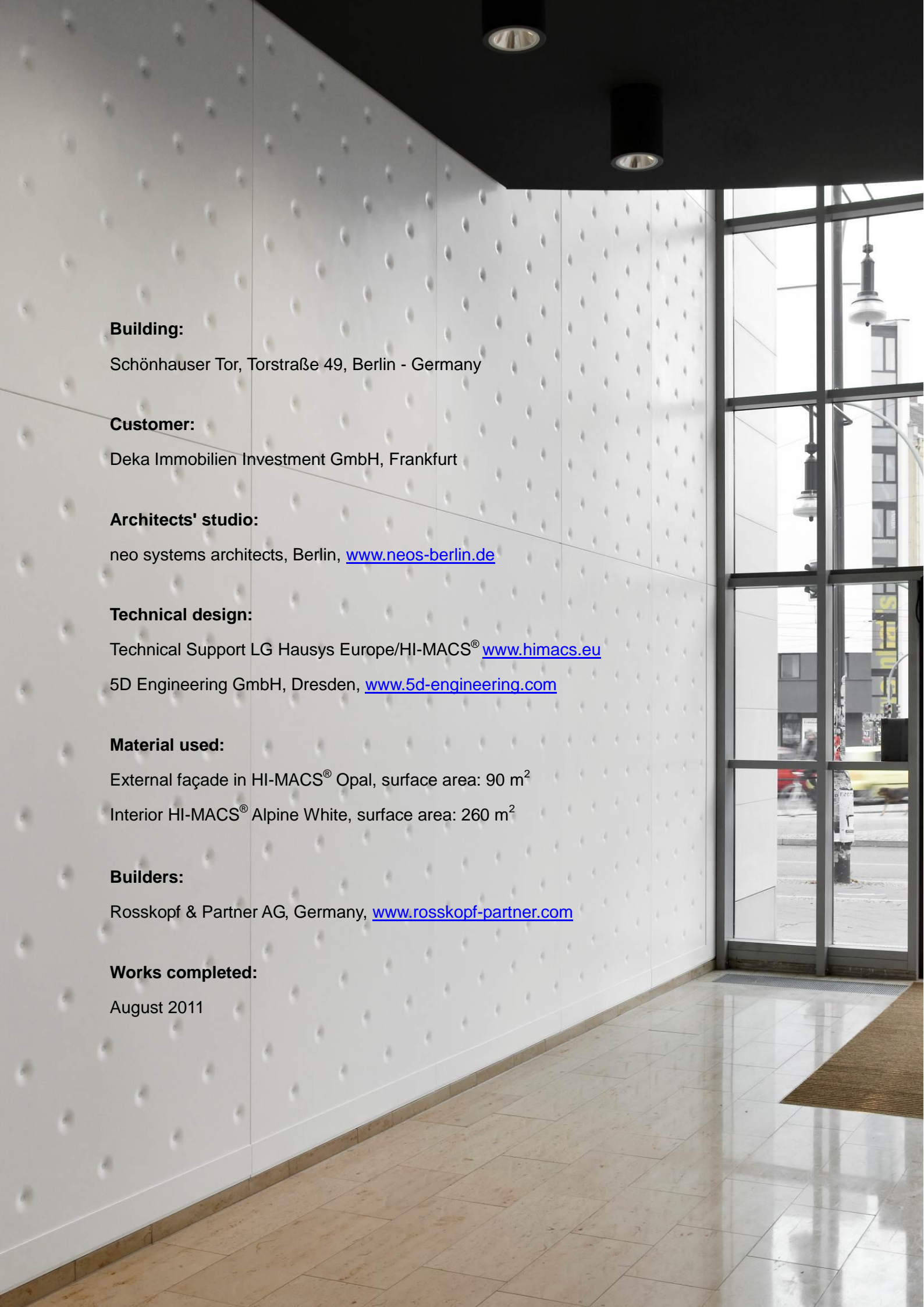


The special appeal of the portal's arch in HI-MACS® is afforded by the translucence of the material. It is in Solid Surface in the Opal colour. The slabs are backlit with LEDs, thereby allowing the reproduction of moving figures, characters and symbols like a raster image.

Photo: Volker Mai

HI-MACS® Press Contact:

Mariana Fredes
LG Hausys Europe
mfredes@himacs.eu
+41 (0)22 879 54 83



The image shows a modern interior space, likely a hallway or lobby. The wall is covered in white panels with a regular pattern of small, circular perforations. The ceiling is black with several recessed circular lights. To the right, there is a large glass window or door that looks out onto a city street. The floor is made of light-colored, polished tiles. The overall atmosphere is clean, bright, and contemporary.

Building:

Schönhauser Tor, Torstraße 49, Berlin - Germany

Customer:

Deka Immobilien Investment GmbH, Frankfurt

Architects' studio:

neo systems architects, Berlin, www.neos-berlin.de

Technical design:

Technical Support LG Hausys Europe/Hi-MACS® www.himacs.eu

5D Engineering GmbH, Dresden, www.5d-engineering.com

Material used:

External façade in HI-MACS® Opal, surface area: 90 m²

Interior HI-MACS® Alpine White, surface area: 260 m²

Builders:

Rosskopf & Partner AG, Germany, www.rosskopf-partner.com

Works completed:

August 2011

HI-MACS[®] ADVANTAGES AT A GLANCE.

The following properties make HI-MACS[®] stand out as the material of “New Generation”:

- **Virtually unlimited range of applications**
- **Countless possibilities for customized design (colour, formability, translucency, etc.)**
- **Valuable, laboratory-tested raw materials**
- **Advanced manufacturing techniques**
- **High-quality processing technology**
- **Ecological commitment**
- **Wide range of sinks and bowls**
- **Ease of maintenance thanks to dirt-repellent surfaces**
- **Resistance to common household chemicals**
- **Resistance to bacteria and viruses**
- **Fire resistance and low flame propagation properties**
- **Excellent value for money**
- **10 + 5-year warranty, the only one of its kind on the market**

If you need further information or need additional images about the projects or product, please don't hesitate to request them at www.himacs.eu/press, or simply contact us.

HI-MACS[®] Press Contact:

Mariana Fredes
LG Hausys Europe
mfredes@himacs.eu
+41 (0)22 879 54 83