

## FORMstudio reinvents a Bermondsey Wall Penthouse, with HI-MACS® taking centre stage

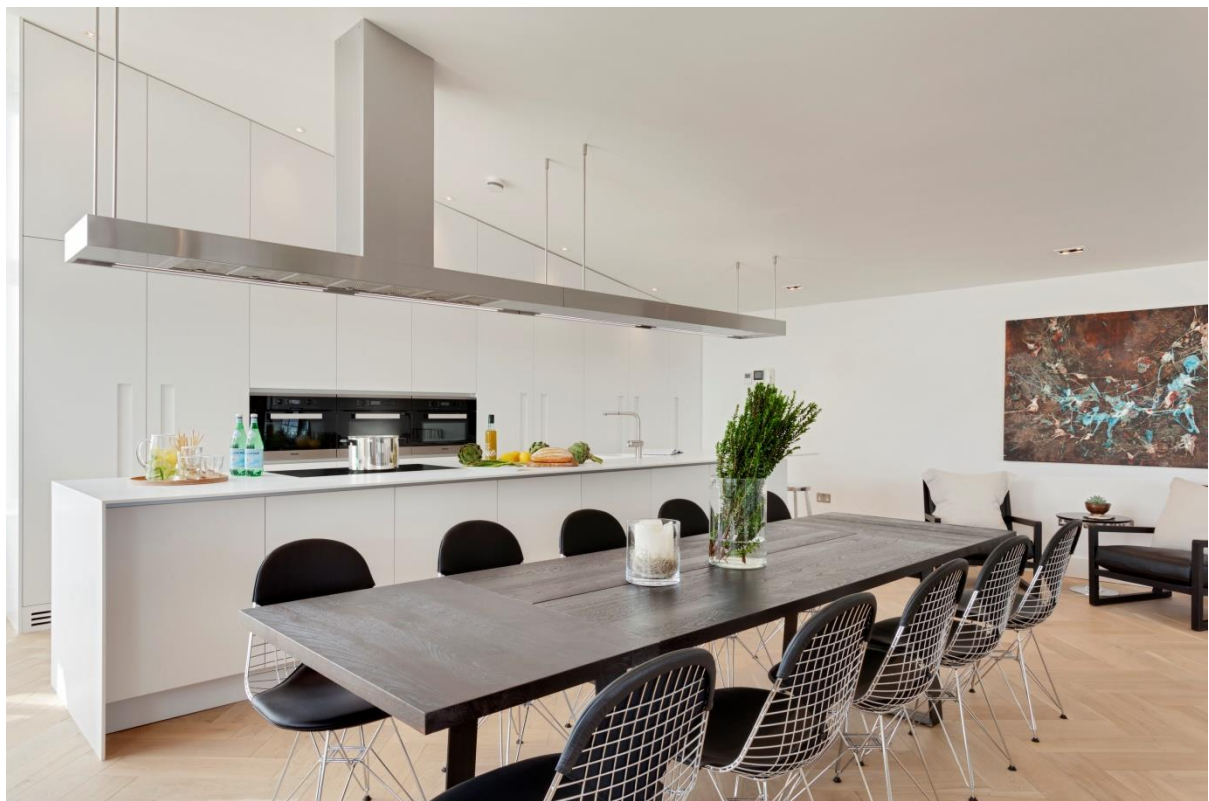


With views over **Tower Bridge** and the **River Thames**, this spectacularly positioned penthouse demanded a spectacular refit. The architects **Paul Lower and Malcolm Crayton from FORMstudio** did not disappoint, opening up this double storey space into a light-filled open-plan home. Using the exceptional HI-MACS® solid surface material in Alpine White meant the calm and restfulness carried into the main kitchen area and en-suite bathroom.

The architects dramatically reconfigured this 240m<sup>2</sup> penthouse, creating an expansive open-plan living space on the upper floor. From the entrance, a first view to the river in the distance draws the visitor forward into a double height space, from which an elegantly detailed stairway leads upward, revealing the spacious open-plan kitchen, dining and living area above.



The almost **5m-long white HI-MACS® kitchen island** with a huge suspended stainless steel cooker hood further articulates and defines the interior landscape, emphasising the dramatic scale and visual coherence of the space. The extraordinary island appears to be made from a single piece, made possible with the seamless joins that can be achieved with the solid surface material. The integrated HI-MACS® double sink is also seamlessly joined to the worktop, ensuring a germ- and dirt-free durable environment, a complete requirement in food-preparation areas, while the worktop extends down the sides of the island for a cohesive effect.



**HI-MACS® Media contact for Europe:**

Mariana Fredes – LG Hausys Europe GmbH - Ph. +41 (0) 79 693 46 99 – [mfredes@lghausys.com](mailto:mfredes@lghausys.com)

High resolution images available: [www.himacs.eu/newsroom](http://www.himacs.eu/newsroom)



On the lower level, a beautiful river-facing master bedroom suite includes an existing floor-to ceiling glazed oriel window cantilevered out over the water to exploit the Canaletto-like panoramic view. The en-suite bathroom features a full-length vanity unit, with Not Only White “Blend” flush basins, all in the super-hygienic solid surface material HI-MACS®. This is the perfect material for use in bathrooms, as it provides a smooth, warm to touch entity. The monolithic seat inside the shower is also from HI-MACS® - as the material is completely non-porous so ideal for shower and wet-room areas. A bespoke HI-MACS® bath completes this soothing environment.



FORMstudio has successfully identified the significant development value in the differential between a flat with a 1990s ‘high end’ specification and a bespoke architecturally designed apartment – this impressive penthouse responds perfectly to the exacting standards expected at the top end of today’s market.



## **Technical information**

**Project name:**

Bermondsey Wall Penthouse

**Location:**

London, England

**Project Architect:**

Paul Lower – FORMstudio [www.formstudio.co.uk](http://www.formstudio.co.uk)

**Material:**

HI-MACS® S028 Alpine White, [www.himacs.eu](http://www.himacs.eu)

Bathroom basins – Not Only White FBL18

**Photo credits:**

© Bruce Hemming Photography



## HI-MACCS® by LG Hausys

[www.himacs.eu](http://www.himacs.eu)

HI-MACCS® is a solid surface material that can be moulded into any shape. It is widely used for architectural and interior applications, such as sculptural and high performance wall-cladding or kitchen, bathroom and furniture surfaces, in commercial, residential and public space projects. It is composed of minerals, acrylic and natural pigments that come together to provide a smooth, non-porous and visually seamless surface which meets the highest standards for quality, aesthetics, fabrication, functionality and hygiene – offering manifold advantages over conventional materials.

HI-MACCS® provides limitless possibilities for surfacing solutions and inspires creative minds from all over the world. **Zaha Hadid, Jean Nouvel, Rafael Moneo, Karim Rashid, Marcel Wanders** and **David Chipperfield**, among others, have completed fabulous projects using HI-MACCS®.

At the forefront of innovation as always, LG Hausys recently introduced two new products. First **HI-MACCS® Ultra-Thermoforming**, an innovative formula that pushes the boundaries of solid surface shaping to a whole new level, with 30% more thermoplastic capabilities - the biggest innovation for the Solid Surface history since its inception in 1967. Now, **HI-MACCS® Intense Ultra**, combining the characteristics from two disparate worlds: **Intense Colour Technology** and **Ultra-Thermoforming**.

LG Hausys' HI-MACCS® uses a simple heating process to give three-dimensional thermoplastic forming capabilities, allows visually seamless designs, offers a virtually limitless range of colours and – for some shades - exhibits a special translucency when exposed to light. Although HI-MACCS® is almost as robust as stone, it can be worked in a similar way as wood: it can be sawn, routed, drilled or sanded.

HI-MACCS® is manufactured using a new generation technology, the **thermal cure**. The temperature reached during the manufacturing process sets HI-MACCS® apart from other solid surfaces and creates a denser, even more homogeneous, sturdy, durable surface – with a better resistance and superior thermoforming performance.

HI-MACCS® does not absorb humidity, is highly resistant to stains, and is easy to clean, maintain and repair.

Countless internationally recognized certificates attest to the quality of HI-MACCS® in terms of ecological commitment, hygiene and fire resistance – being the first Solid Surface in the market to receive the official **European Technical Approval (ETA) for façades** – for Alpine White S728 colour. Furthermore, HI-MACCS® has obtained the French **QB certification** and **CSTB ATec “Avis Technique”** for facade applications.

HI-MACCS® offers a 15-year warranty for products fabricated by a Quality Club Member.



### HI-MACCS®. Because Quality Wins.

For more information and to stay connected, visit our [website](#) and our [newsroom](#).

*Let's connect!*



\* **HI-MACCS®** is designed and produced by **LG HAUSYS**, a world leader in the technology sector belonging to LG Group, and distributed by **LG HAUSYS EUROPE** based in Frankfurt (Germany).

HI-MACCS® Media contact for Europe:

Mariana Fredes – LG Hausys Europe GmbH - Ph. +41 (0) 79 693 46 99 – [mfredes@lghausys.com](mailto:mfredes@lghausys.com)

High resolution images available: [www.himacs.eu/newsroom](http://www.himacs.eu/newsroom)